



MAGICINFO EXPRESS 2 QUICK START GUIDE

What can MagicInfo do?

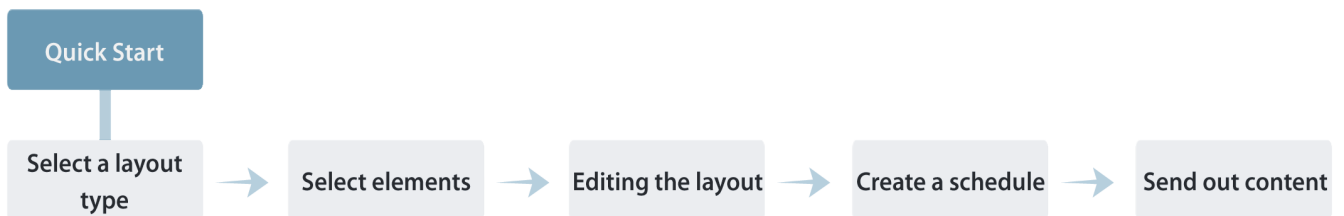
1. Create content incl. pictures, layouts and much more.
2. Create and manage time schedules for playing your content

Magicinfo is intuitive and easy to use.

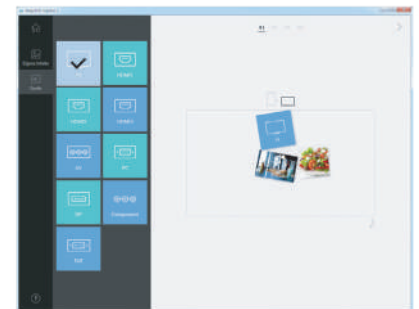
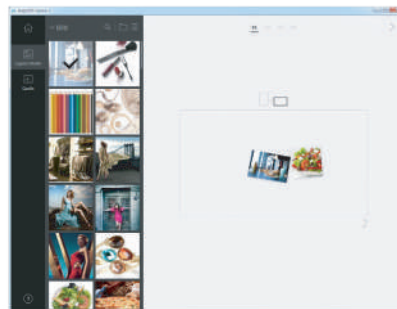
Magicinfo works within a LAN network and can be managed by PC, smartphone or tablet with Android & OS

Quick Start:

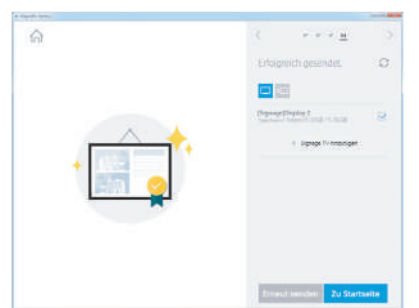
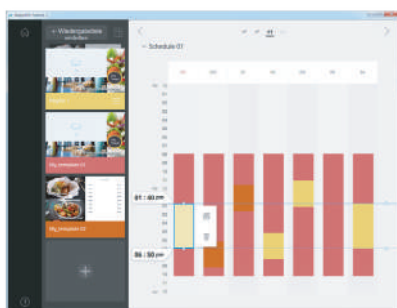
Simple, step by step, layout adapts automatically (recommended for beginners)



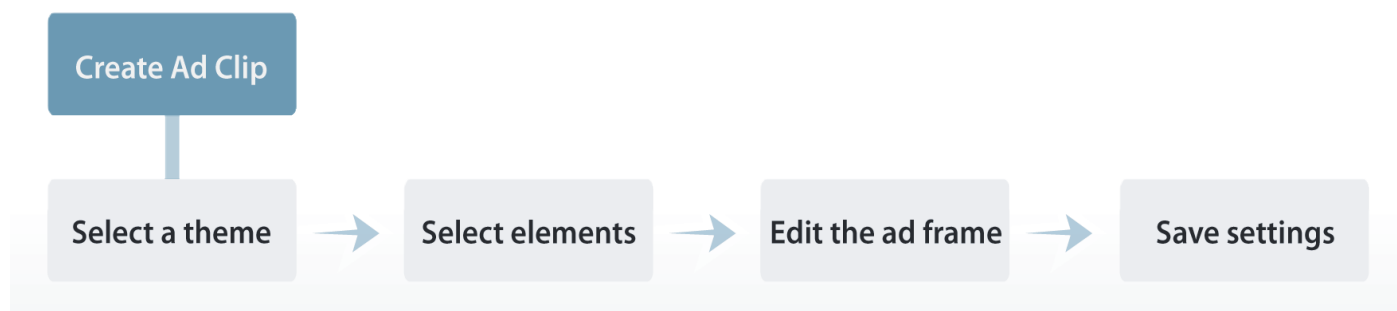
Select layout, pictures / videos / text and much more. Insert and position, Save



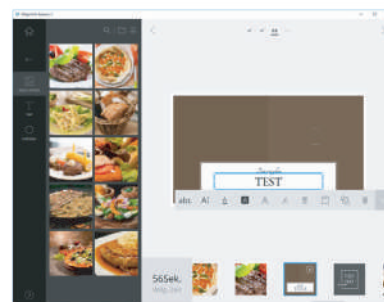
Create a time schedule, send via LAN, WLAN or USB to the appropriate device.



Ad Clip: Create a promotional video with photos and text bodies



Select a topic, position and order the content, review the video, adjust if necessary.



Download Magicinfo Express here:

<http://displaysolutions.samsung.com/support/resources/download-center>

Check out the detailed manual of Magicinfo Express here:

https://displaysolutions.samsung.com/pdf/manual/1348/MagicInfo_Express_2.5_Manual_-_Eng_1.2.pdf